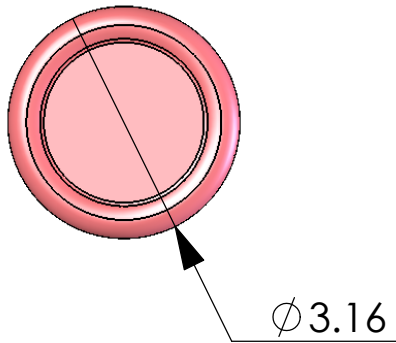
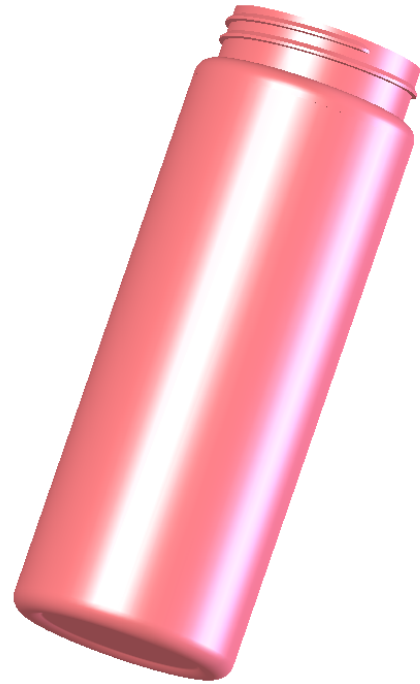
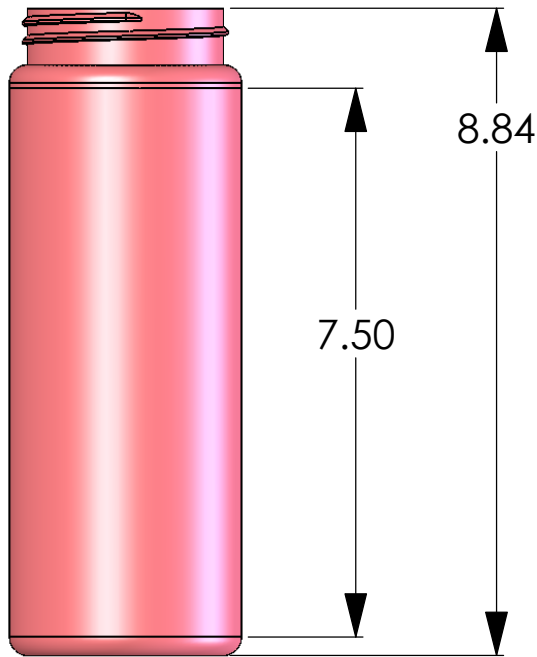
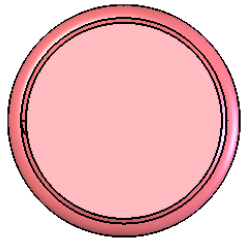



REVISIONS				
ZONE	REV.	DESCRIPTION	DATE	APPROVED



Nominal Capacity - 32 fluid ounces
Overflow Capacity - 36.2 fluid Ounces
Material - HDPE (Solvay B53-35H-011)
 or equivalent
Neck Finishes - SPI "M" style 28-400 or
 70-410 special available
Weight - 50 ± 3 grams
Standard Bulk Pack - 120 bottles per box
Reshippers - Available on request
Stock - Natural & Flamed - Custom matched
 colors also available

PROPRIETARY AND CONFIDENTIAL THE INFORMATION CONTAINED IN THIS DRAWING IS THE SOLE PROPERTY OF PRO-GRAM PLASTICS, INC. ANY REPRODUCTION IN PART OR AS A WHOLE WITHOUT THE WRITTEN PERMISSION OF PRO-GRAM PLASTICS, INC. IS PROHIBITED.	DIMENSIONS ARE IN INCHES		NAME	DATE	 Pro-Gram Plastics, Incorporated 700 PRO-GRAM PARKWAY • GENEVA, OHIO 44041 TELEPHONE (440) 466-8080 • FAX (440) 466-8099
	TOLERANCES:		DRAWN	Walt	
	FRACTIONAL ± 1/16		CHECKED		
	ANGULAR: MACH ± 1/2 DEG		ENG APPR.		
	TWO PLACE DECIMAL ± 0.062		MFG APPR.		
THREE PLACE DECIMAL ± 0.031		Q.A.		70-410 Straight Sided Cylinder Quart	
MATERIAL		COMMENTS:			
NEXT ASSY	USED ON	FINISH			
APPLICATION		DO NOT SCALE DRAWING		SIZE A DWG. NO. REV.	
				SCALE= File: 70-410 Straight Sided Cylinder Quart SHEET 1 OF 1	