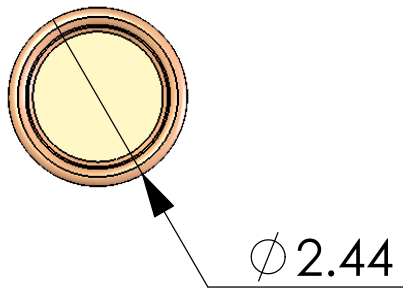
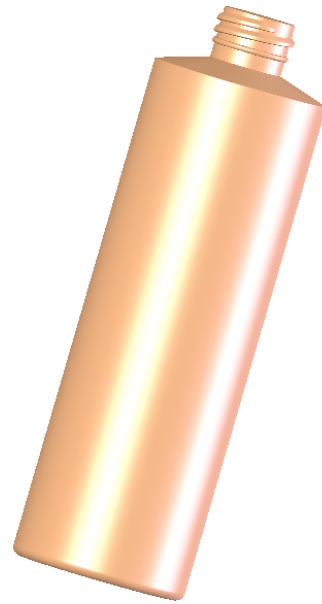
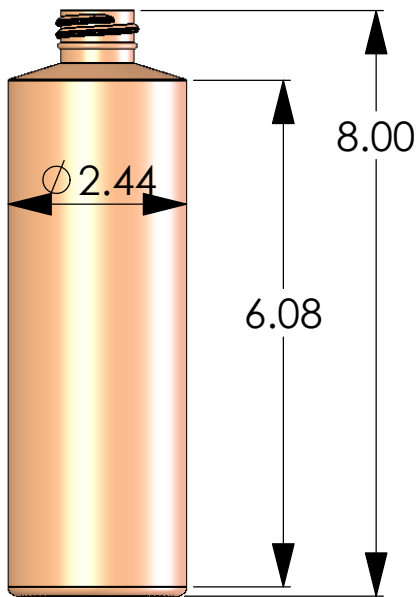
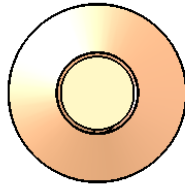



REVISIONS				
ZONE	REV.	DESCRIPTION	DATE	APPROVED



Nominal Capacity - 16 fluid ounces
Overflow Capacity - 17.1 fluid Ounces
Material - HDPE (Solvay B53-35H-011)
 or equivalent
Neck Finishes - SPI "M" style 28-410 only
Weight - 32 ± 2.5 grams
Standard Bulk Pack - 180 bottles per box
Reshippers - Available on request
Stock - Natural & Flamed - Custom matched colors also available

PROPRIETARY AND CONFIDENTIAL THE INFORMATION CONTAINED IN THIS DRAWING IS THE SOLE PROPERTY OF PRO-GRAM PLASTICS, INC. ANY REPRODUCTION IN PART OR AS A WHOLE WITHOUT THE WRITTEN PERMISSION OF PRO-GRAM PLASTICS, INC. IS PROHIBITED.			DIMENSIONS ARE IN INCHES TOLERANCES: FRACTIONAL $\pm 1/16$ ANGULAR: MACH $\pm 1/2$ DEG TWO PLACE DECIMAL ± 0.062 THREE PLACE DECIMAL ± 0.031	NAME	DATE	 Pro-Gram Plastics, Incorporated 700 PRO-GRAM PARKWAY • GENEVA, OHIO 44041 TELEPHONE (440) 466-8080 • FAX (440) 466-8099		
	DRAWN	Walt						
	CHECKED							
	ENG APPR.							
	MFG APPR.							
MATERIAL		FINISH		Q.A.	COMMENTS:	28-410 Tall Pint Cylinder		
NEXT ASSY	USED ON			SIZE			DWG. NO.	REV.
APPLICATION		DO NOT SCALE DRAWING		SCALE=			File: 28-410 Tall Pint Cylinder	SHEET 1 OF 1