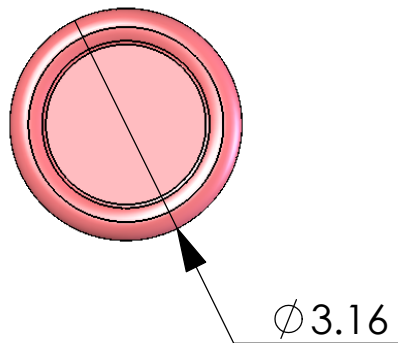
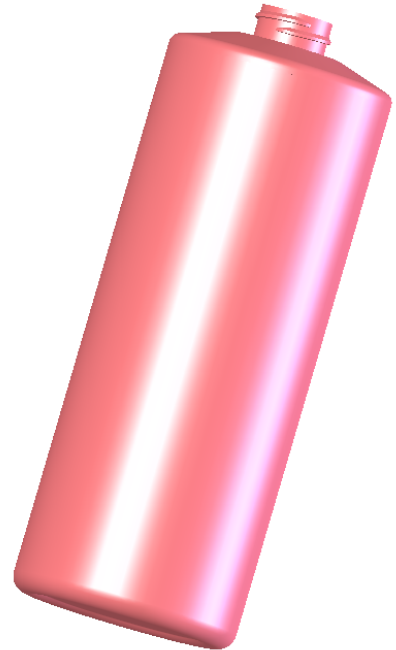
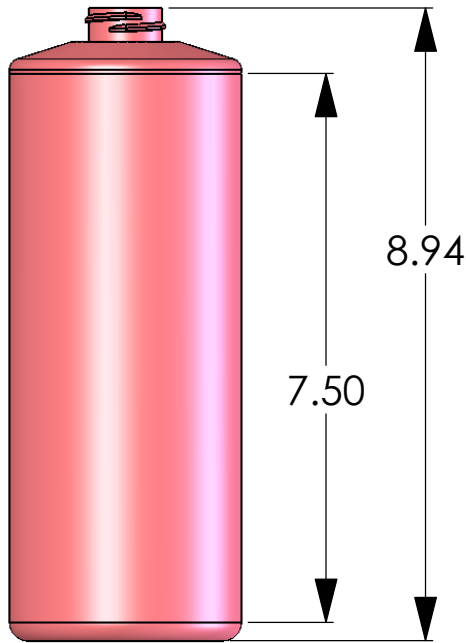
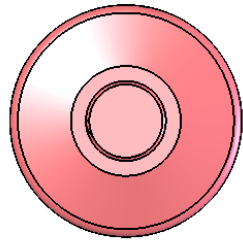


REVISIONS				
ZONE	REV.	DESCRIPTION	DATE	APPROVED



**Nominal Capacity** - 32 fluid ounces  
**Overflow Capacity** - 34.7 fluid Ounces  
**Material** - HDPE (Solvay B53-35H-011)  
 or equivalent  
**Neck Finishes** - SPI "M" style 28-400 or  
 70-410 special available  
**Weight** - 50 ± 3 grams  
**Standard Bulk Pack** - 120 bottles per box  
**Reshippers** - Available on request  
**Stock** - Natural & Flamed - Custom matched  
 colors also available

		DIMENSIONS ARE IN INCHES TOLERANCES: FRACTIONAL ± 1/16 ANGULAR: MACH ± 1/2 DEG TWO PLACE DECIMAL ± 0.062 THREE PLACE DECIMAL ± 0.031	NAME	DATE
			DRAWN	Walt
			CHECKED	
			ENG APPR.	
			MFG APPR.	
		MATERIAL	Q.A.	
		FINISH	COMMENTS:	
NEXT ASSY	USED ON			
APPLICATION		DO NOT SCALE DRAWING		



## 28-400 Straight Sided Cylinder Quart

SIZE	DWG. NO.	REV.
<b>A</b>		
SCALE=	File: 28-400 Straight Sided Cylinder Quart	SHEET 1 OF 1

**PROPRIETARY AND CONFIDENTIAL**  
 THE INFORMATION CONTAINED IN THIS  
 DRAWING IS THE SOLE PROPERTY OF  
 PRO-GRAM PLASTICS, INC. ANY  
 REPRODUCTION IN PART OR AS A WHOLE  
 WITHOUT THE WRITTEN PERMISSION OF  
 PRO-GRAM PLASTICS, INC. IS PROHIBITED.